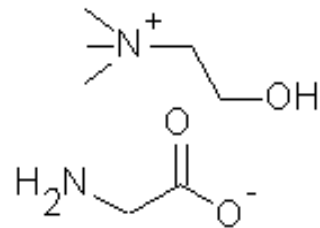


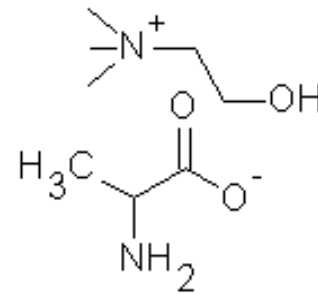
# Biosensors & RTILs



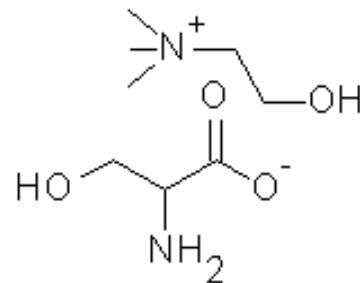
# Preparazione superficie elettrodo modificato



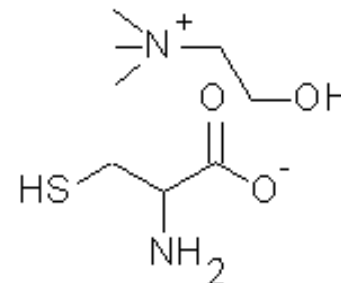
**[Ch][Gly]**



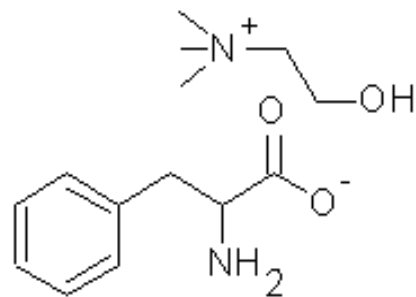
**[Ch][Ala]**



**[Ch][Ser]**

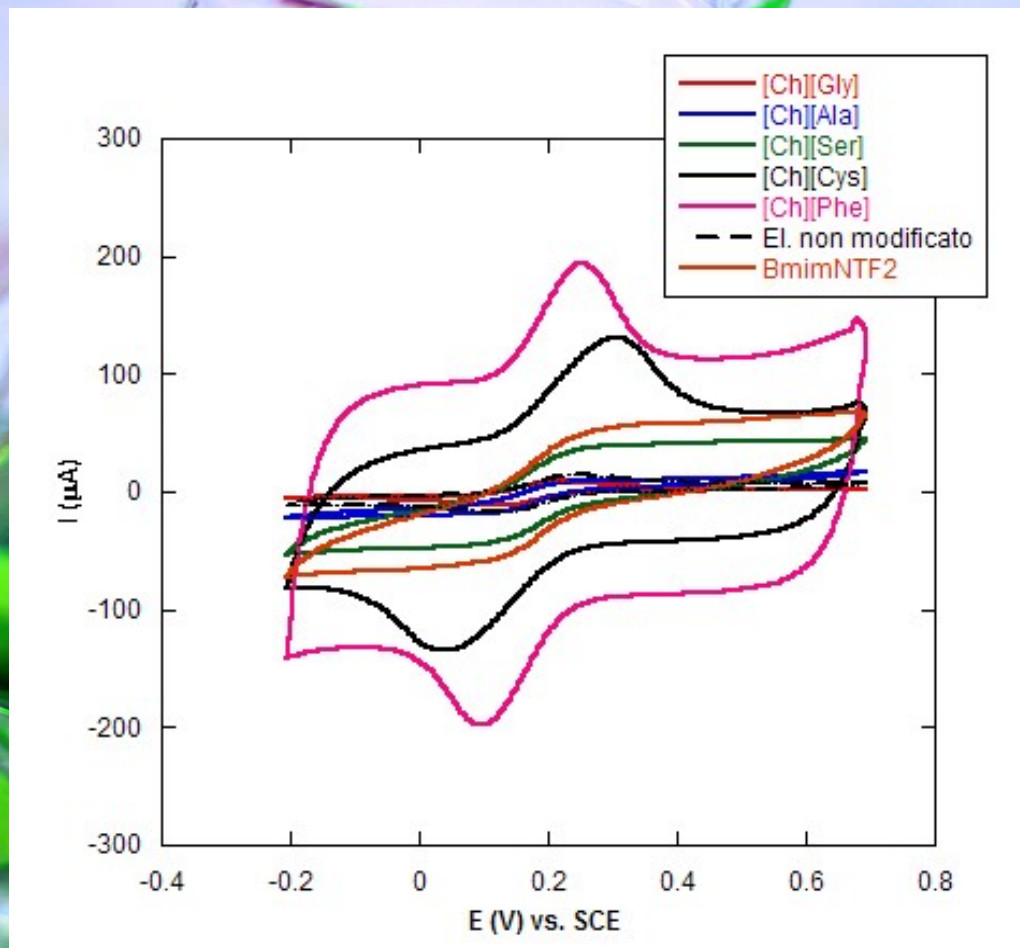


**[Ch][Cys]**



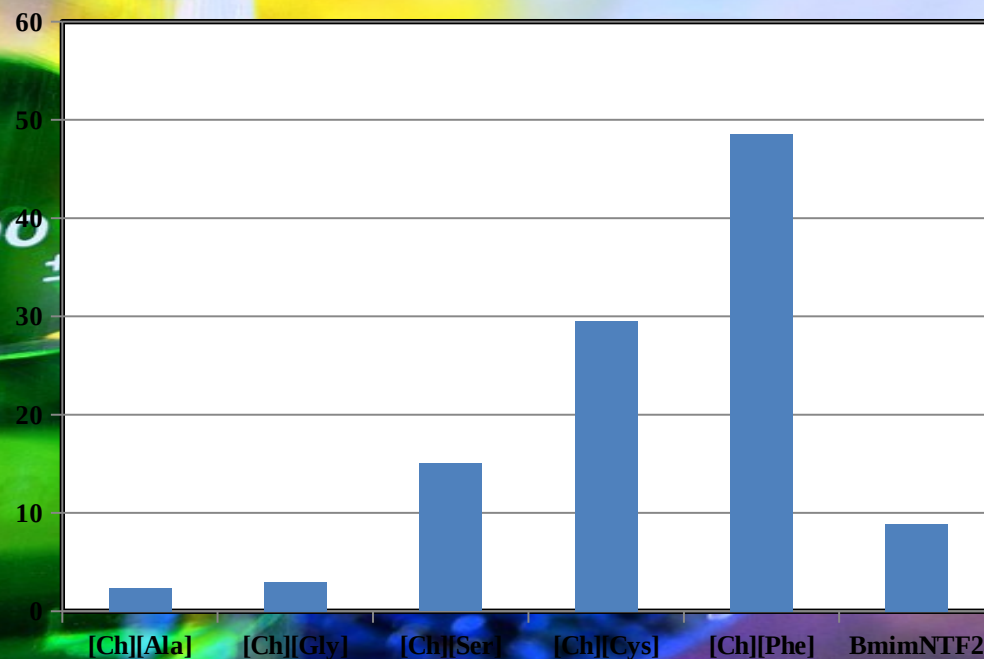
**[Ch][Phe]**

# Caratterizzazione elettrochimica



# Caratterizzazione elettrochimica

RTILs	$A_{EA}$ (cm <sup>2</sup> )	$A_{EA}/A_G$
[Ch][Gly]	0,21	3,0
[Ch][Ala]	0,17	2,5
[Ch][Ser]	1,06	15,0
[Ch][Cys]	2,09	29,5
[Ch][Phe]	3,43	48,5
BmimNTF <sub>2</sub>	0,63	9,0



# Caratteristiche chimico – fisiche

